



Easy Chess Puzzle # 0048

By

G Bud Games
<https://gbud.in>

October 20, 2021

Contents

Easy Chess puzzle # 0048 - Mate in 1 move	3
Easy chess puzzle 0048	3
Solution to easy chess puzzle 0048	4
Solution 1	4
Right moves for the solution to the easy chess puzzle 0048	5
Explanation for the moves	6
Categories of easy chess puzzle 0048	6
How to view the solution to easy chess puzzle 0048	6
How to get help for moves in the easy chess puzzle 0048	7
Play chess for free	9

List of Figures

1	Solve this easy chess puzzle 0048. Mate in 1 move @ https://gbud.in/gdf8gw1	3
2	Solve this chess puzzle online with solution @ https://gbud.in/gdf8gw1	3
3	Initial board position of easy chess puzzle 0048	4
4	Bxa2 - Though the bishop captures the hanging queen, this is a bad move	5
5	Ra8# - Since the opponent made a mistake by moving the bishop which was protecting a8, rook moves in and check-mate. This is called back-rank mate	5
6	Click the solution button to view solutions @ https://gbud.in/gdf8gw1	7
7	Click the help button to get help on next move @ https://gbud.in/gdf8gw1	8
8	Solve more easy puzzles @ https://gbud.in/chsezpz	8
9	Solve other puzzles @ https://gbud.in/chsgppz	8
10	Play chess online for free. Solve puzzles and play with friends	9
11	Solve this puzzle online by scanning this QR code or go to the link below	10

Easy Chess puzzle # 0048 - Mate in 1 move

Solve this easy chess puzzle and improve your chess games through improvement of your chess strategies and chess tactics.

Puzzle No : 0048

Difficulty level : Easy

Description : Mate in 1 move

Next Move : White

Player level : Beginner

Short URL for puzzle : <https://gbud.in/gdf8gw1>

Easy chess puzzle 0048

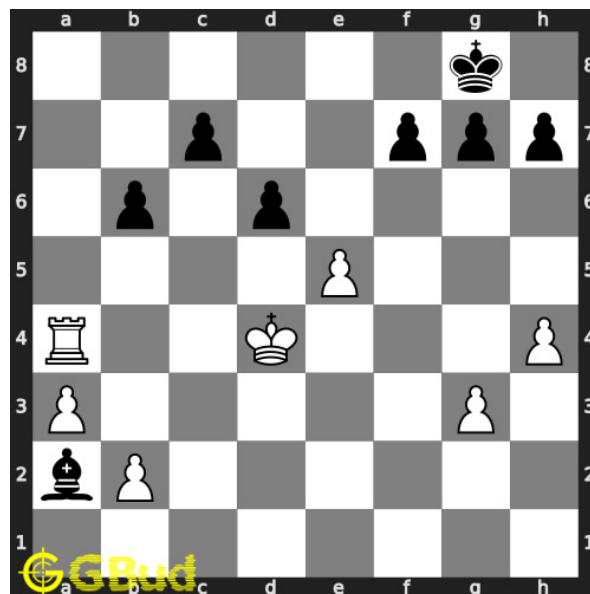


Figure 1: Solve this easy chess puzzle 0048. Mate in 1 move @ <https://gbud.in/gdf8gw1>



Figure 2: Solve this chess puzzle online with solution @ <https://gbud.in/gdf8gw1>

Solution to easy chess puzzle 0048

At this puzzle, next **move** is by **White**. The objective of the puzzle is to mate in 1 move.

See the interactive solution at the [puzzle page](#)

Solution 1

Initial board position This is the initial board position of easy chess puzzle 0048.

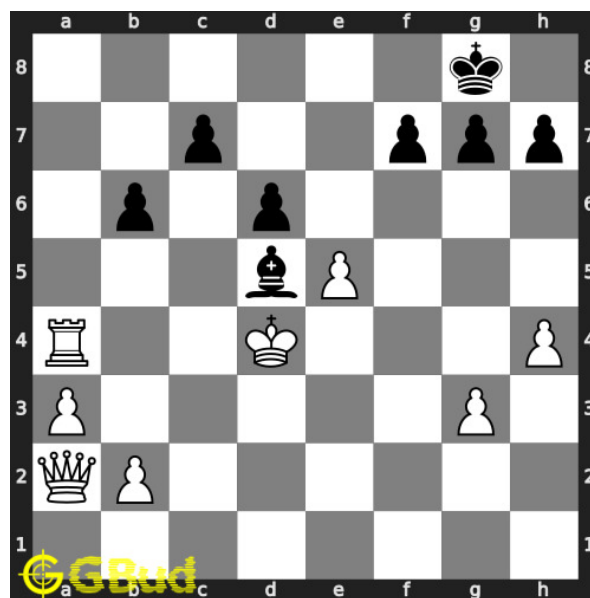


Figure 3: Initial board position of easy chess puzzle 0048

Move 1 Move by black

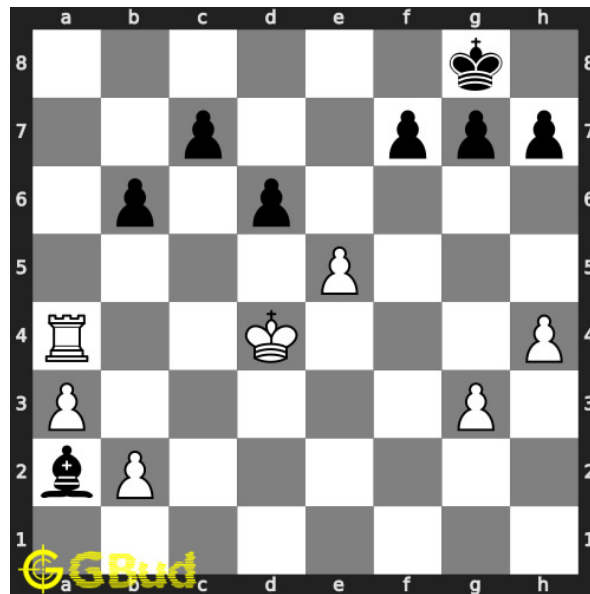


Figure 4: Bxa2 - Though the bishop captures the hanging queen, this is a bad move

Move 2 Move by white

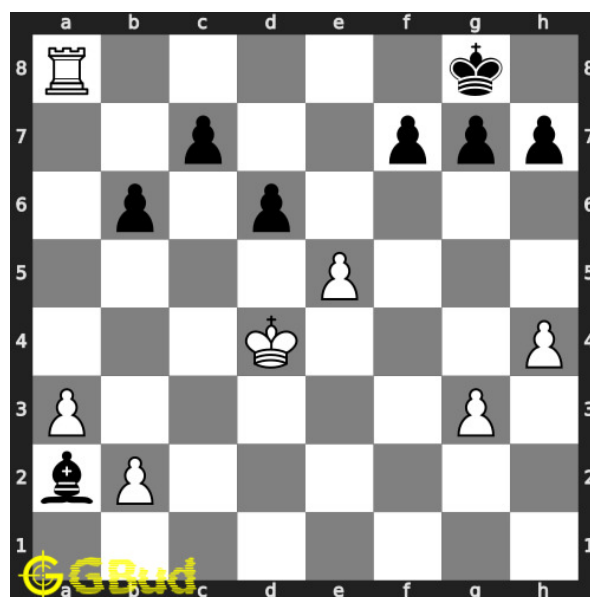


Figure 5: Ra8# - Since the opponent made a mistake by moving the bishop which was protecting a8, rook moves in and checkmate. This is called back-rank mate

Right moves for the solution to the easy chess puzzle 0048

Based on the objective of the puzzle, you have to make the right moves. Following are the right moves

1. Ra8#

Explanation for the moves

1. Ra8# - Since the opponent made a mistake by moving the bishop which was protecting a8, rook moves in and checkmate. This is called back-rank mate
2. Bxa2 - Though the bishop captures the hanging queen, this is a bad move
3. For right move - You have used the opponent's mistake. Good move
4. For wrong move - You could have had a back-rank mate. Try again

Categories of easy chess puzzle 0048

This easy chess puzzle falls in these categories.

1. [Easy chess puzzles](#)
2. [Mate in 1 puzzles in chess](#)
3. [Endgame puzzles in chess](#)
4. [Strategy puzzles in chess](#)
5. [Mate pattern puzzles in chess](#)

How to view the solution to easy chess puzzle 0048

To view the [solution to this puzzle](#), follow the steps given below

1. Go to the [puzzle page](#)
2. Click the solution button (Key as shown [below](#)) to view the solution

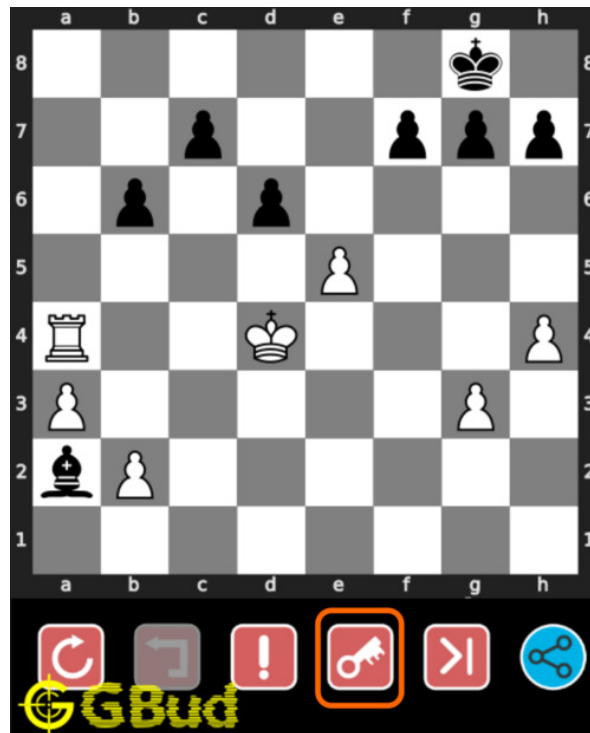


Figure 6: Click the solution button to view solutions @ <https://gbud.in/gdf8gw1>

How to get help for moves in the easy chess puzzle 0048

To get help or the possible next moves in the puzzle, , follow the steps given below

1. Go to the [puzzle page](#)
2. Click the help button (exclamation mark as shown [below](#)) to get help or suggestion on next possible [move](#)

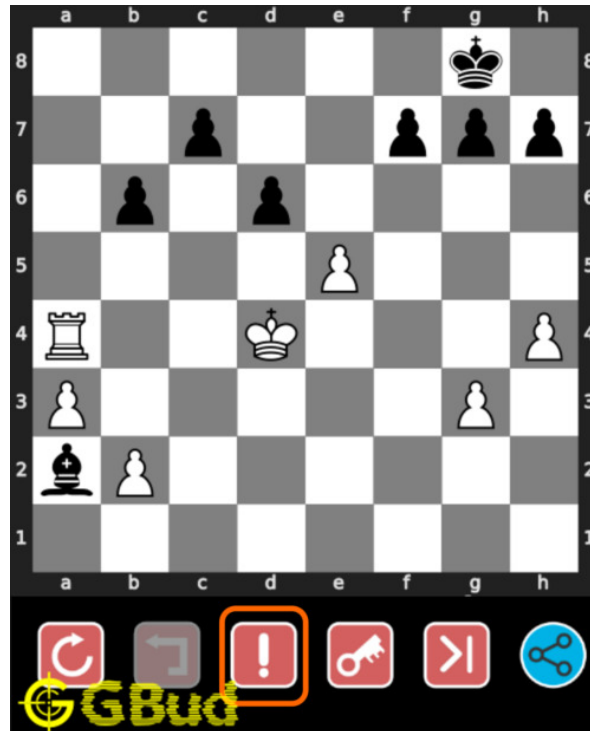


Figure 7: Click the help button to get help on next move @ <https://gbud.in/gdf8gw1>



Figure 8: Solve more easy puzzles @ <https://gbud.in/chsezpz>



Figure 9: Solve other puzzles @ <https://gbud.in/chsgppz>

Play chess for free



Figure 10: Play chess online for free. Solve puzzles and play with friends

Play chess for free at <https://gbud.in/chs>

We present you a platform to play chess online with friends for free. No need to install any app. You can play chess for free without registration or login.

Simple. You can do several chess related activities.

1. [solve chess puzzles](#)
2. [learn about chess](#)
3. [play chess with computer](#)
4. [play chess with friend](#)
5. [create your own chess games](#)
6. [fen viewer](#)
7. [fen editor](#)
8. [fen generator](#)
9. [pgn viewer](#)
10. [chess board editor](#)

11. [view famous chess games.](#)



Figure 11: Solve this puzzle online by scanning this QR code or go to the link below

<https://gbud.in/gdf8gw1>

Read the latest article on Easy Chess puzzle # 0048 - Mate in 1 move by scanning this QR code or click the link

Previous article : « [Easy Chess puzzle # 0047 - Mate in 1 move](#)

Next article : [Easy chess puzzles](#) »

[Back to top](#)

[Contact Us](#)

© GBud Games 2021